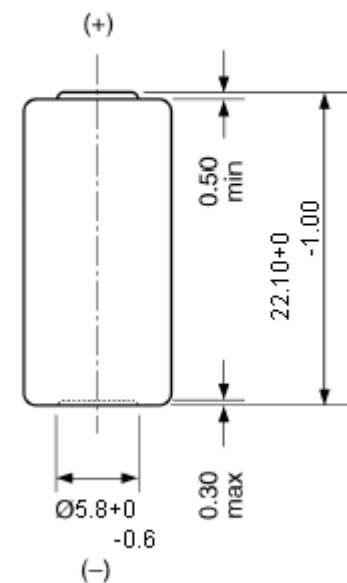
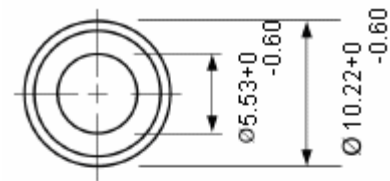


Model No.: **GP10AF**

- Description** : Mercury Free & Lead Free
Alkaline High Voltage Multicell
- Nominal Voltage** : 9Volts
- Nominal Dimensions** : $\varnothing 10.22\text{mm} \times 22.1\text{mm}$
- Terminal** : Nickel plated flat contacts - protruded
red(+); recessed black (-)
- Jacket** : Metal jacket
- Internal Connection** : Pressure
- Applications** : Remote controller
- Average Weight** : 5.6g
- Date Code** : Unless otherwise specified, each
batteries will carry a numeric year
code and analogue month code (+)
- Shelf Life** : Not less than 90% of the service
capacity within first year storage
at $20 \pm 2^\circ\text{C}$ 55 \pm 20%RH
- Insulation** : 5M Ω min.
- Resistance**
- Close Circuit Voltage** : 7.0 Volts (min.)(load resistor 600 Ω
at $20 \pm 2^\circ\text{C}$ for 0.1 to 2 seconds)
- Current Drain** : Under 15mA pulse, 0.5mA
continuous
- Nominal Service Life** : 74hrs (at 15k Ω load)
(to 4.5V at $20 \pm 2^\circ\text{C}$)
- Average Service** : 38mAh (at 15k Ω load)
- Capacity**
(to 4.5V at $20 \pm 2^\circ\text{C}$)

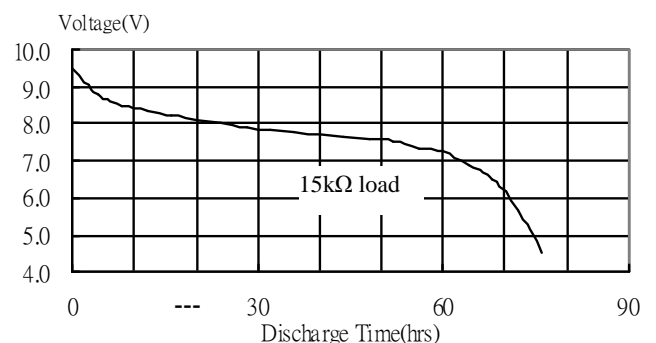
Cross References:

GP	Eveready	Duracell	Varta
10AF	---	---	---



Unit : mm

Typical Discharge characteristics at $20 \pm 2^\circ\text{C}$



The information (subject to change without prior notice) contained in this document is for reference only and should not be used as a basis for product guarantee or warranty. For applications other than those described here, please consult your nearest GP Sales and Marketing Office or Distributors.