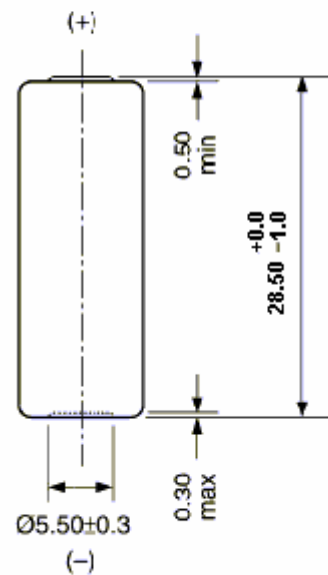
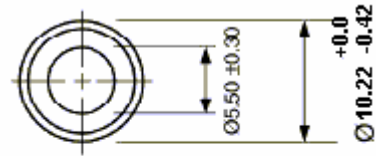


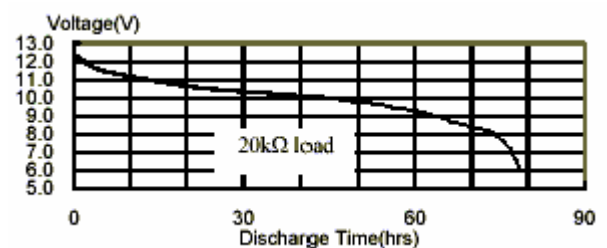
Model No.: **GP23AF**

Description	: Mercury Free & Lead Free Alkaline High Voltage Multicell
Nominal Voltage	: 12Volts
Nominal Dimensions	: Ø10.22mm×28.5mm
Terminal	: Nickel plated flat contacts - protruded red(+); recessed black (-)
Jacket	: Metal jacket
Internal Connection	: Pressure
Applications	: Remote controller
Average Weight	: 7.5g
Date Code	: Unless otherwise specified, each batteries will carry a numeric year code and analogue month code (+)
Shelf Life	: Not less than 90% of the service capacity within first year storage at 20 ± 2 °C 55 ± 20 %RH
Insulation	: 5MΩ min.
Resistance	
Close Circuit Voltage	: 9.5 Volts (min.)(load resistor 800Ω at 20 ± 2 °C for 0.1 to 2 seconds)
Current Drain	: Under 15mA pulse, 0.5mA continuous
Nominal Service Life	: 74hrs (at 20kΩ load) (to 6.0V at 20 ± 2 °C)
Average Service	: 38mAh(at 20kΩ load)
Capacity	
	(to 6.0V at 20 ± 2 °C)



Unit : mm

Typical Discharge characteristics at 20 ± 2 °C



The information (subject to change without prior notice) contained in this document is for reference only and should not be used as a basis for product guarantee or warranty. For applications other than those described here, please consult your nearest GP Sales and Marketing Office or Distributors.