

Model No.: **GP26AF**

Description : Mercury Free & Lead Free
Alkaline High Voltage Multicell

Nominal Voltage : 6Volts

Nominal Dimensions : Ø8.0mm×15.7mm

Terminal : Nickel plated flat contacts - protruded
red(+); recessed black (-)

Jacket : Metal jacket

Internal Connection : Pressure

Applications : Remote controller

Average Weight : 2.4g

Date Code : Unless otherwise specified, each
batteries will carry a numeric year
code and analogue month code (-)

Shelf Life : Not less than 90% of the service
capacity within first year storage
at 20 ± 2 °C 55 ± 20 %RH

Insulation : 5MΩ min.

Resistance

Close Circuit Voltage : 5.0Volts (min.)(load resistor 1.6KΩ
at 20 ± 2 °C for 0.1 to 2 seconds)

Current Drain : Under 15mA pulse, 0.5mA
continuous

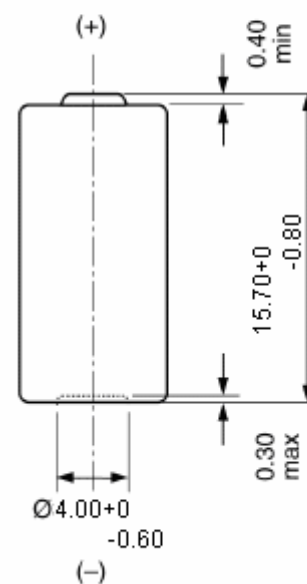
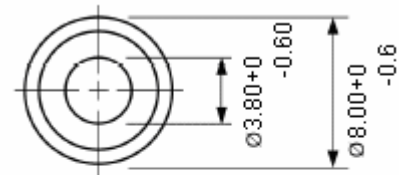
Nominal Service Life : 34hrs (at 10kΩ load)
(to 3.0V at 20 ± 2 °C)

Average Service : 18mAh(at 10kΩ load)

Capacity
(to 3.0V at 20 ± 2 °C)

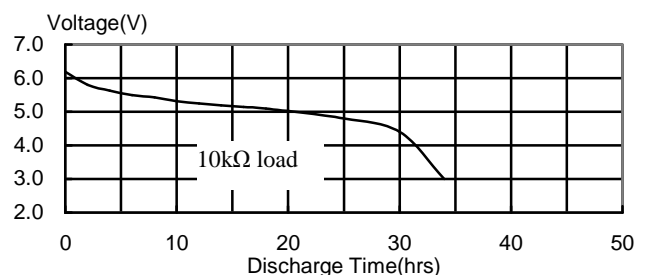
Cross References:

| | | | |
|------|----------|----------|-------|
| GP | Eveready | Duracell | Varta |
| 26AF | --- | --- | --- |



Unit : mm

Typical Discharge characteristics at 20 ± 2 °C



The information (subject to change without prior notice) contained in this document is for reference only and should not be used as a basis for product guarantee or warranty. For applications other than those described here, please consult your nearest GP Sales and Marketing Office or Distributors.